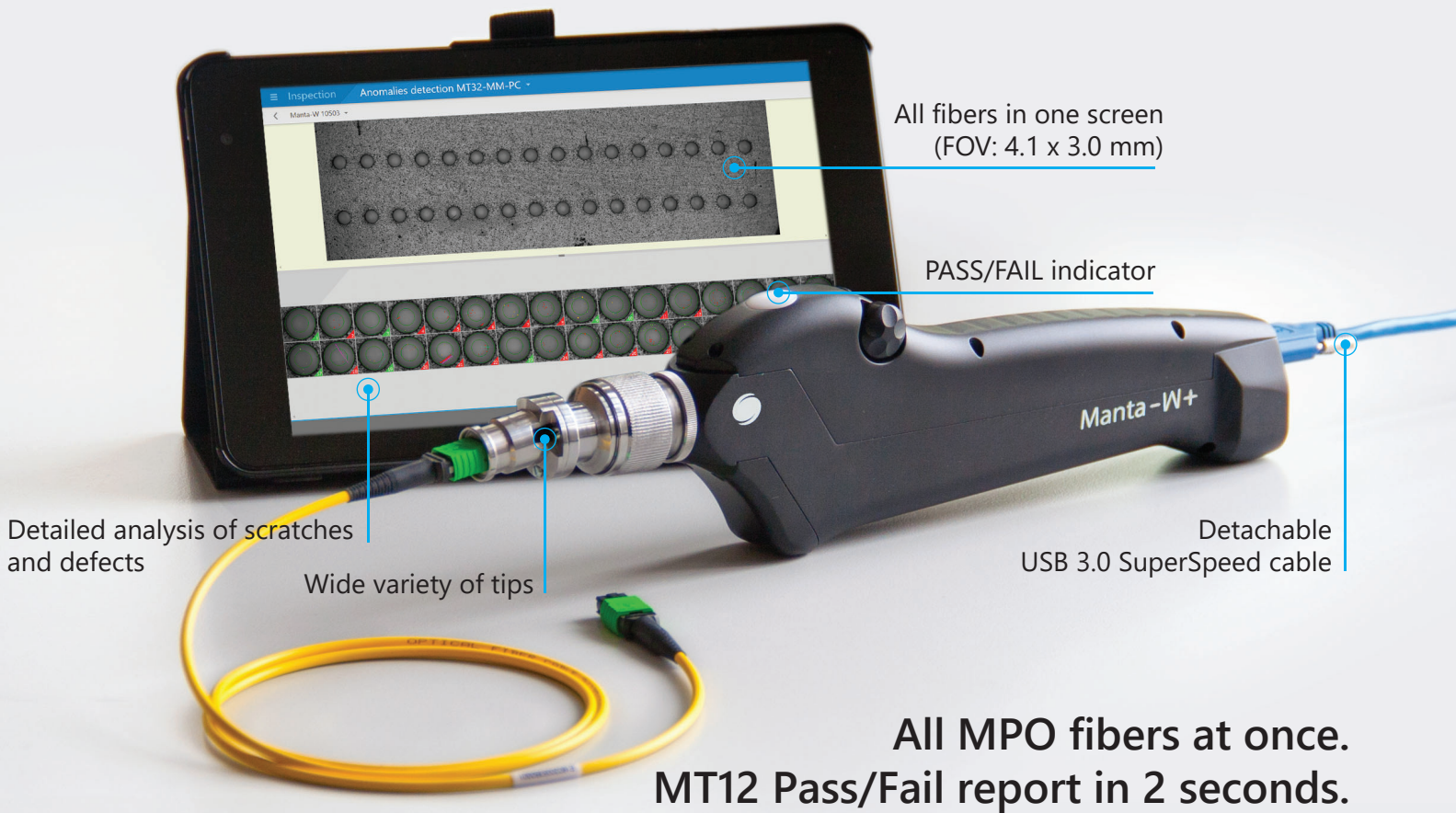


3532 Seagate Way, Suite 100,  
Oceanside, CA 92056, USA  
http://www.sumix.com  
E-mail: info-team@sumix.com  
Tel.: +1 (877) 233-3385

# Manta-W+

## microscope probe



**All MPO fibers at once.  
MT12 Pass/Fail report in 2 seconds.**



Single fiber



Multi-fiber



Auto focus



0.75 µm defect size detection



Scratch detection



Industry standards



PASS/FAIL verdict



Up to 96 fibers in just one scan



*"Great option for MTP/MPO testing; ability to check up to 96 fibers on one screen is impressive. Broad range of compatible connectors makes it an even more impressive product."*

—The Lightwave Innovation Reviews, judge's comment

# Application

- field inspection;
- in lab or production as a benchtop microscope (with a cradle)

# Specification

**Connectors tested:** male and female MPO connectors (SM and MM), MT ferrules, LC, FC, SC, E2000™, QSFP, ARINC, MIL-38999, High-power SMA, Avim, mini-Avim, and more. Patchcord and bulkhead side. Custom tips can be developed for special connectors.

NEW: Tips for 3M™ Expanded Beam Optical Connector, ODC®, Q-ODC®, MXC®, HMFOC, CS® and SN® connectors added to the range.

**Field of view:** 4.1 × 3.0 mm

**Defect size detection:** 0.75 μm

**Optical resolution:** 1.8 μm

**Magnification:** 260×

**Focus:** Autofocus

NEW: Focus-stacking feature added to handle the cases when a connector is not inserted properly and only part of the ferrule gets in focus.

**Camera type:** CMOS, 12MP, monochrome

**Power source:** USB 3.0 port of PC

**Dimensions (H × W × L):** 70 × 28 × 246 mm (2.76 × 1.1 × 9.69 inches)

**Weight:** 491 g (1.08 lbs)

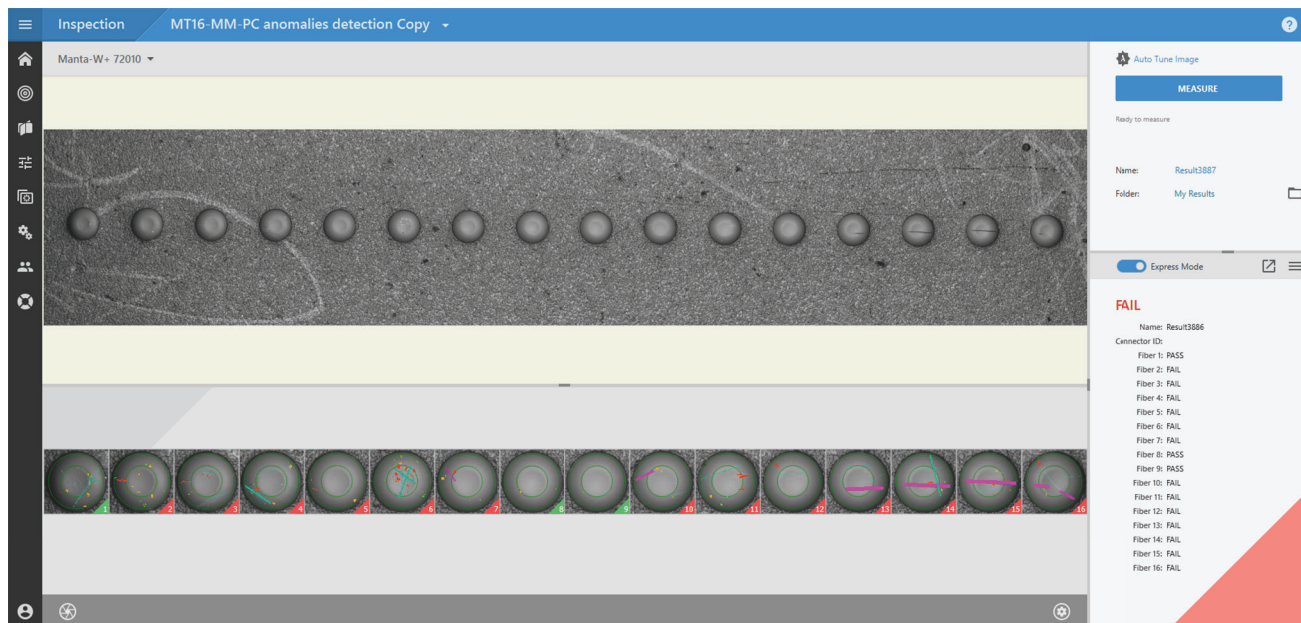
**Material:** aluminum housing, stainless steel barrel

**Compatible with:** desktop PC, laptop, tablet

**Operating system:** Windows 10

**Kit contents:** SMX-Manta-W+ microscope, USB 3.0 cable, Case, MaxInspect analytical software

NEW: Sumix now offers a variety of optical connector cleaning tools to cover all your inspection and cleaning needs in one purchase.



Measurement result for 16-fiber MPO connector.